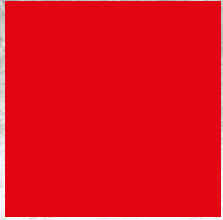


CGIL



«Futuro stabilimenti FCA e CNHI»

Mercoledì 27 giugno 2018

STABILIMENTI FCA

- FCA Mirafiori 3.659
- FCA Stampi 239
- FCA Presse 677
- FCA Costruz. Sp. 367
- FCA Meccaniche 1.400
- Teksid Carmagnola 831
- Comau Grugliasco 1.175
- Enti centrali 7.500
- None e Volvera 932

FPT Verrone 600

MASERATI Grugliasco 1.683

VM Cento 1.190

MASERATI Modena 1.096

SEVEL Atessa 6.021

FPT Termoli 2.700

FCA Cassino 4.380

Enti centrali Pomigliano 4.750

FMA Pratola Serra 1.813

FCA Pomigliano 4.750

FCA Melfi 7.468

-  MOTORI
-  ASSEMBLAGGIO
-  DIPENDENTI

STABILIMENTI CNH



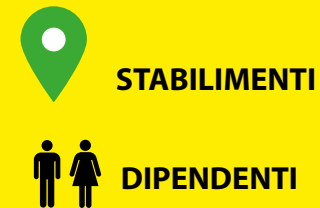
STABILIMENTI



DIPENDENTI



STABILIMENTI MAGNETI MARELLI



MODELLI IN PRODUZIONE E RELATIVI ADDETTI

FASCIA

PICCOLA



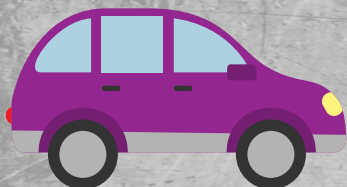
STABILIMENTI

MODELLI

ADDETTI

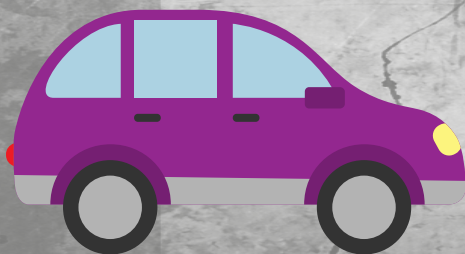
Melfi.....	Punto.....	1.000	} 6.500
Pomigliano.....	Panda.....	4.750	
Mirafiori.....	Alfa Mito.....	750	

MEDIA



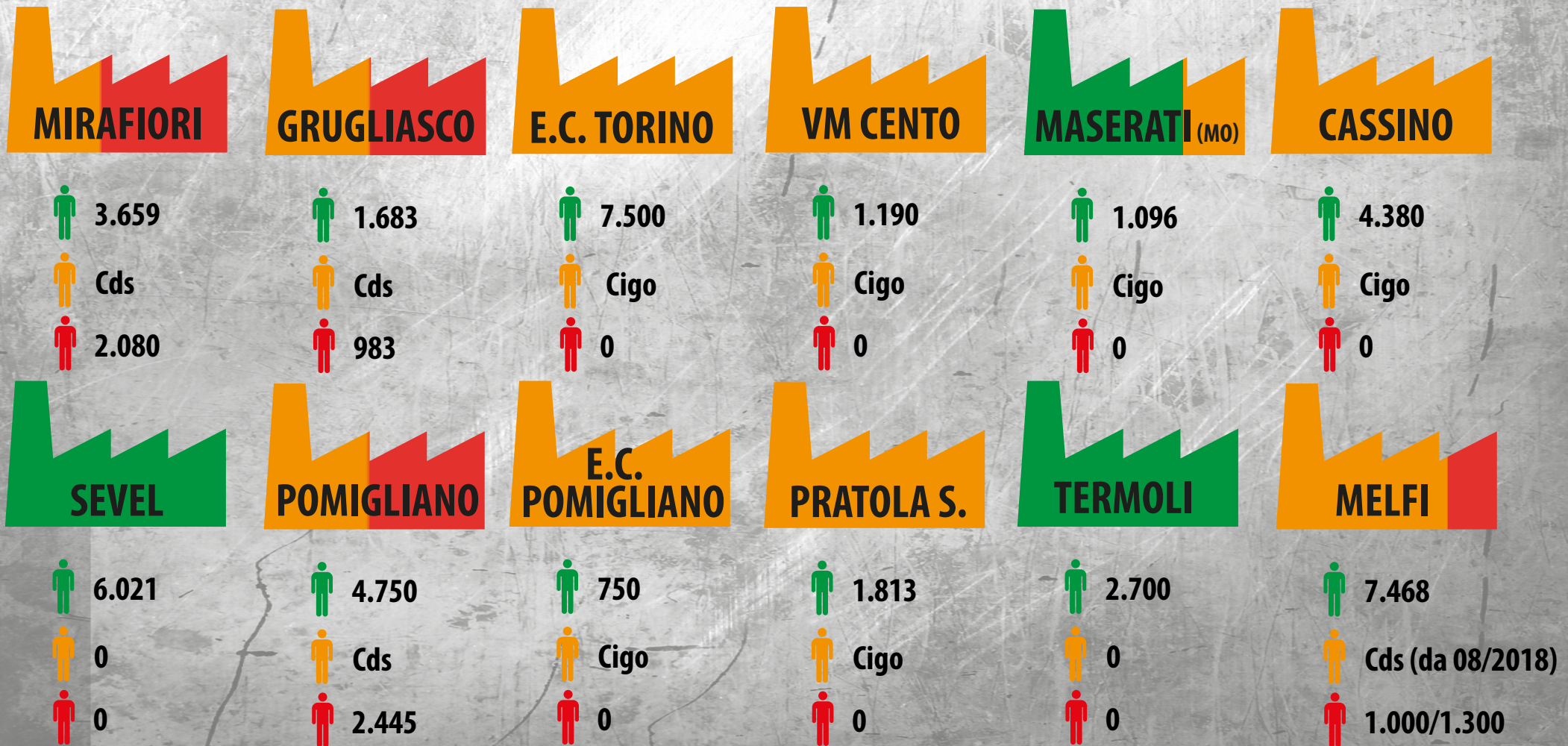
Melfi.....	500x-Jeep Renegade.....	6.400	} 7.400
Cassino.....	Giulietta.....	1.000	

PREMIUM



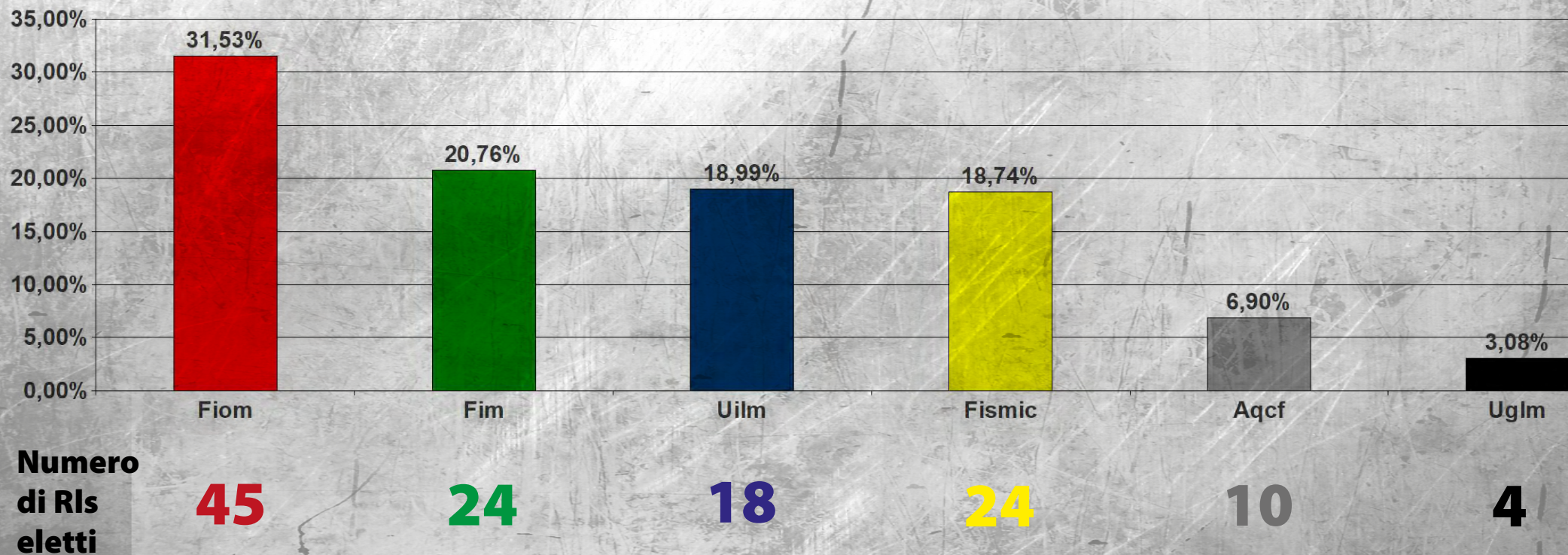
Mirafiori.....	Maserati Levante.....	2.900	} 8.263
Cassino.....	Stelvio-Giulia.....	3.380	
Grugliasco.....	Maserati.....	1.683	
Modena.....	Maserati.....	300	

AMMORTIZZATORI SOCIALI ED ESUBERI



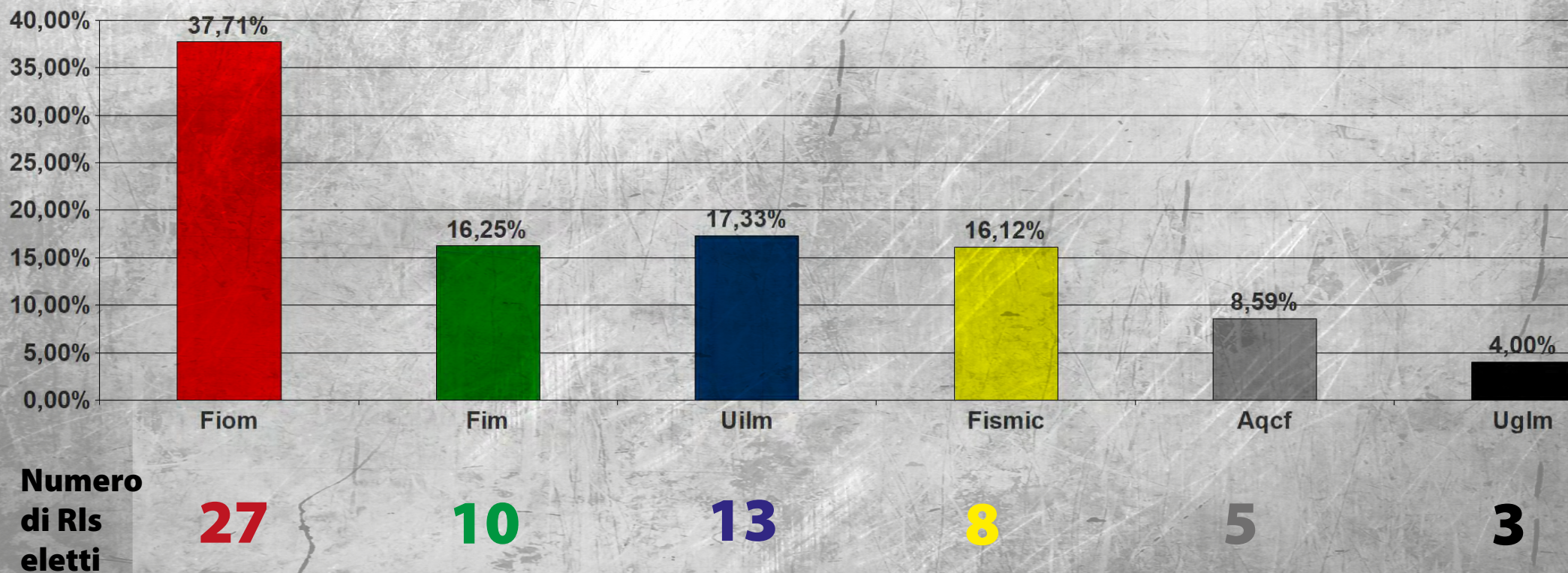
GRUPPO FCA

% VOTI ELEZIONI RLS



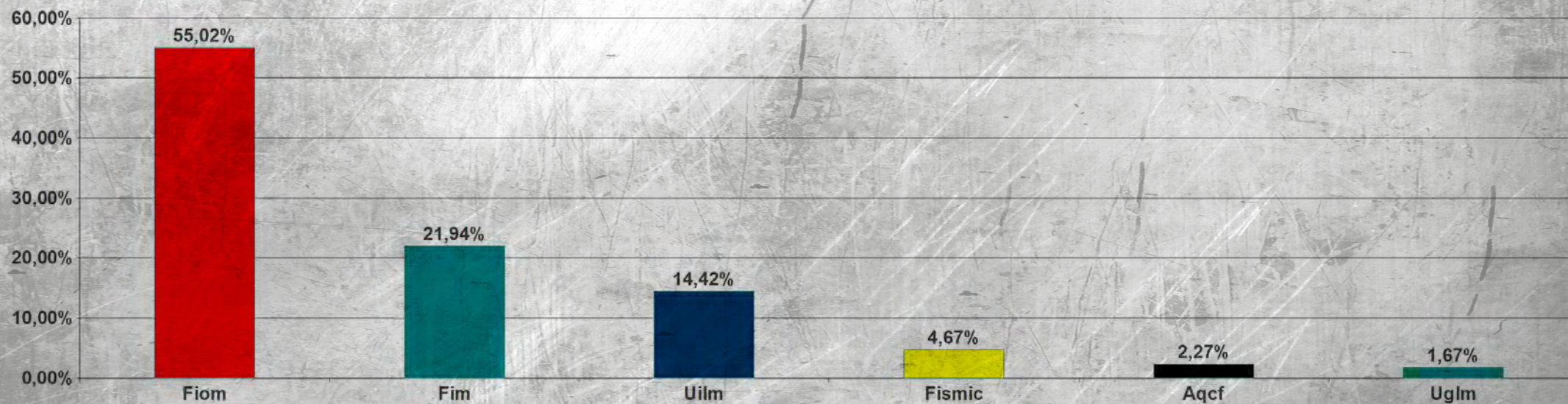
GRUPPO CNH

% VOTI ELEZIONI RLS



GRUPPO MAGNETI MARELLI

% VOTI ELEZIONI RLS



Numero
di Rls
eletti

23

13

5

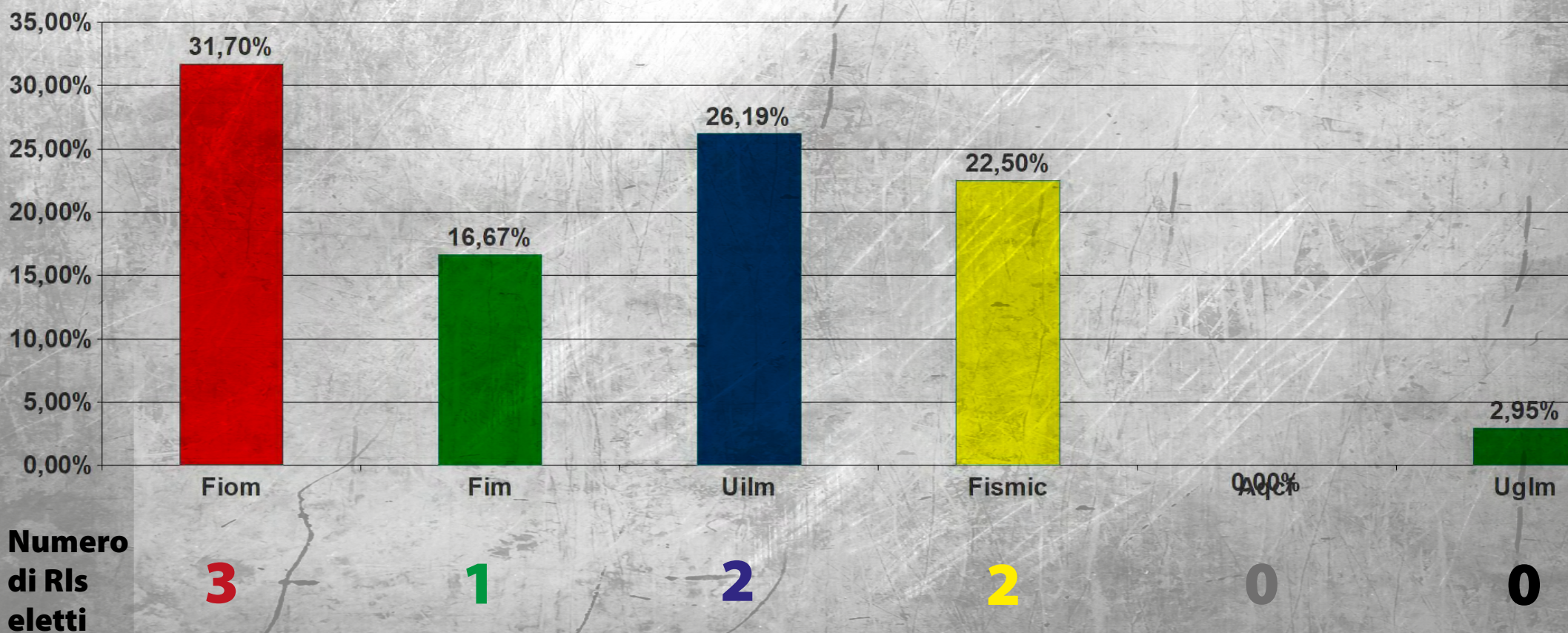
0

1

0

FCA MELFI

% VOTI ELEZONI RLS



FCA/CNH/MAGNETI MARELLI

% VOTI ELEZONI RLS

